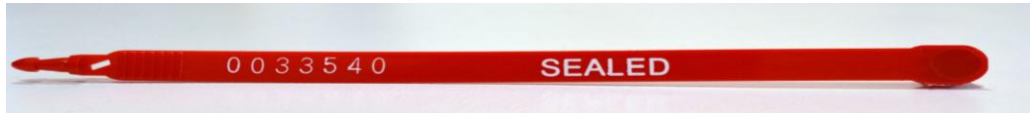




PLASTIC TRUCK SEAL



The Plastic Truck Seal is the most secure and reliable way to secure your trailer doors and transportation equipment. Because of its patented design, the Plastic Truck Seal is also the easiest to use and the strongest plastic trailer seal available.

Features:

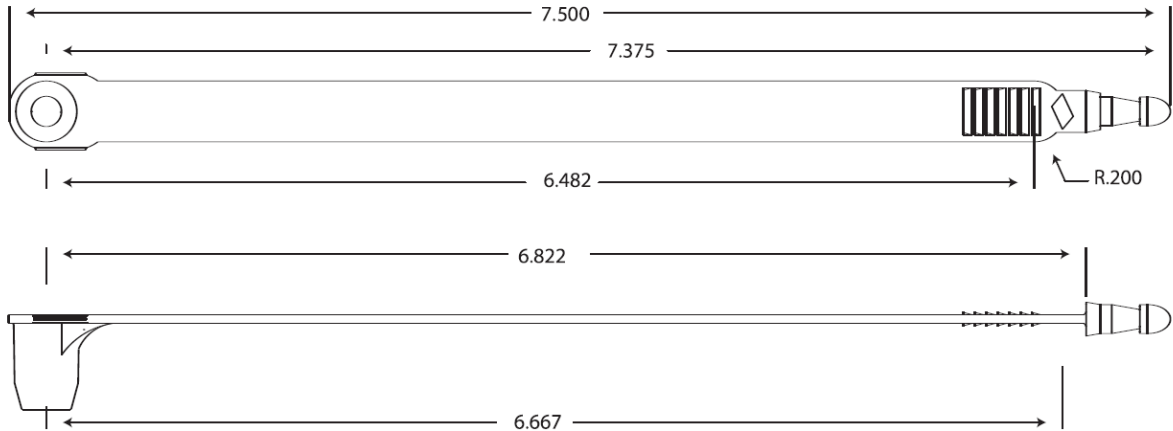
- Durable, all-plastic, one-piece construction.
- Patented tamper-resistant acetyl locking mechanism.
- Weather resistant; withstands extreme cold and heat.
- Individually numbered and stamped with company name.
- Produced in easy-to-use strips of 20 with no plastic waste.

Applications:

- Trailer Doors
- Bulk Tankers
- Railcars

Seals shown not actual size.





Actual Size

Materials: High Density Polyethylene
and Acetal

Operational length: 7"

Hot Stamped Printing:
Numbering: 7 digits
Logo: 1/4" x 4"
(17 characters maximum)

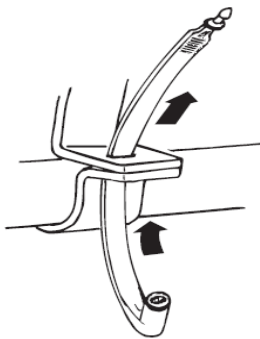
Barcoding: Interleave 2 of 5,
Code 128, Code 39

Packing:
20 seals per strip
1,000 per carton

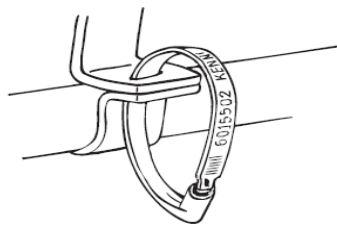
Gross Weight:
9 lbs. per thousand

Box Dimensions:
9.5" x 11" x 12.5"

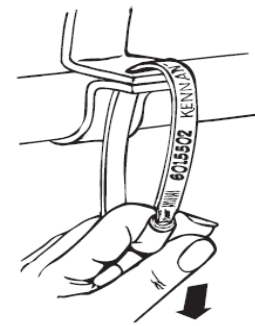
Apply



1. Insert the arrow end of seal through opening of item to be sealed.



2. Bend around and insert the arrow end into locking chamber. Push firmly until arrow is engaged and you hear a click.



3. Tug on seal to ensure seal is locked.